

COMMERCIAL SITE

FOR SALE



Recker Highway at Coolee Road, Winter Haven

NRT



PROPERTY OVERVIEW

Triangular shaped commercial parcel, near youth athletic fields. Mixture of single family and multifamily residential.

DETAILS

SITE: 1.36 acres of vacant land

PRICE: \$250,000

FOR MORE DETAILS CONTACT:

Gloria J. Spanjers/Mike Nolen, Realtors®
Coldwell Banker Commercial NRT

Main 863-294-7541
Gloria 863-206-4749 cell
Mike 863-508-1717

290 Cypress Gardens Blvd.
Winter Haven, FL 33880

mycommercialteam.com

©2015 Coldwell Banker Real Estate LLC, dba Coldwell Banker Commercial Affiliates. All Rights Reserved. Coldwell Banker Real Estate LLC, dba Coldwell Banker Commercial Affiliates fully supports the principles of the Equal Opportunity Act. Each Office is Independently Owned and Operated. Coldwell Banker Commercial and the Coldwell Banker Commercial Logo are registered service marks owned by Coldwell Banker Real Estate LLC, dba Coldwell Banker Commercial Affiliates.



COMMERCIAL SITE

FOR SALE



Recker Highway at Coolee Road, Winter Haven

NRT

Commercial Site on Recker Highway

Winter Haven, Florida

DESCRIPTION:	A triangular parcel of land, high and dry, near youth athletic fields and a mixture of single family and multifamily properties.
LOCATION:	Recker Highway at Coolee Road, Winter Haven
SITE:	Vacant Land. 1.36 acres
INGRESS & EGRESS:	Easy access, good visibility
UTILITIES:	Water, sewer, telephone, gas and electric available
LAND USE:	Polk County Land Use —Residential Suburban (RS)
EMERGENCY:	Fire, Police, and ambulance service available to the site.
PRICE:	\$250,000



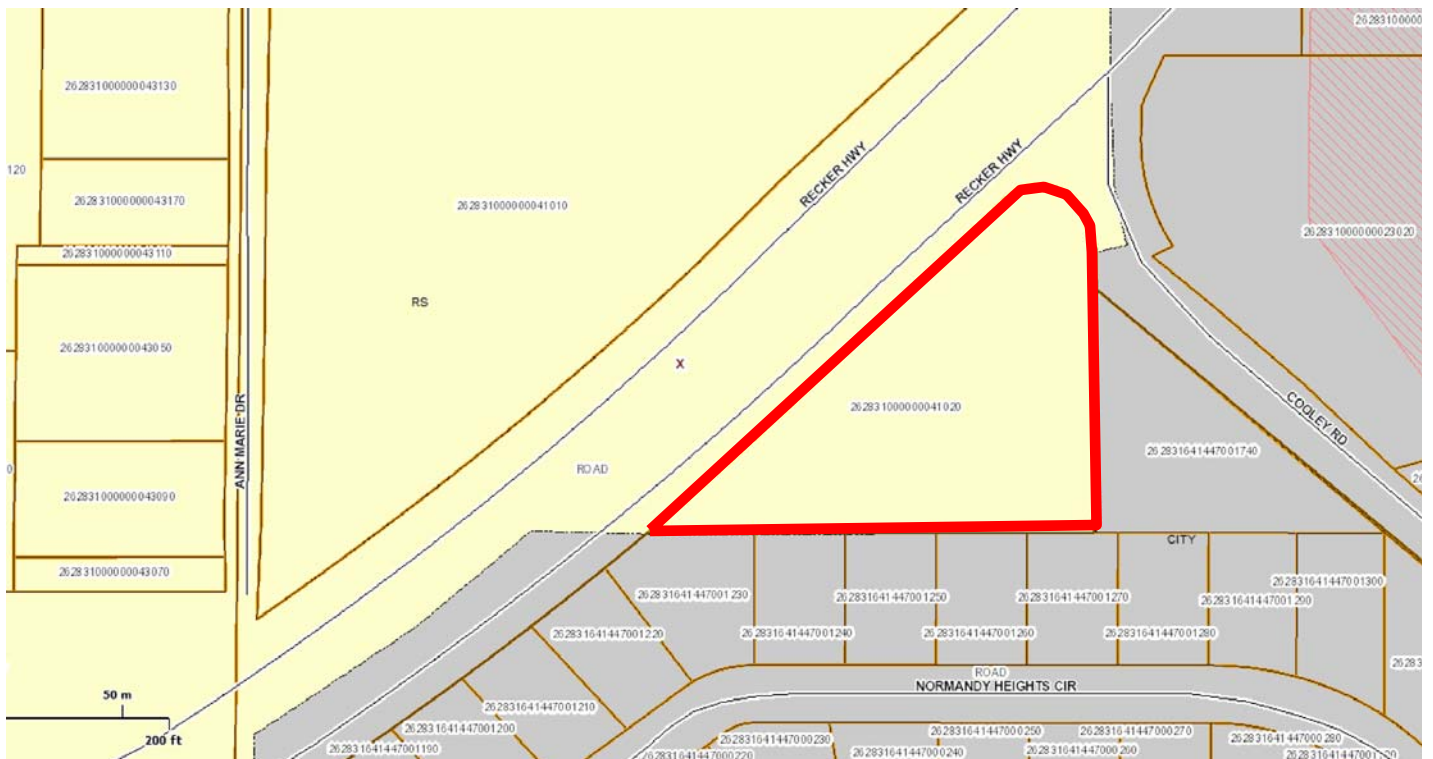
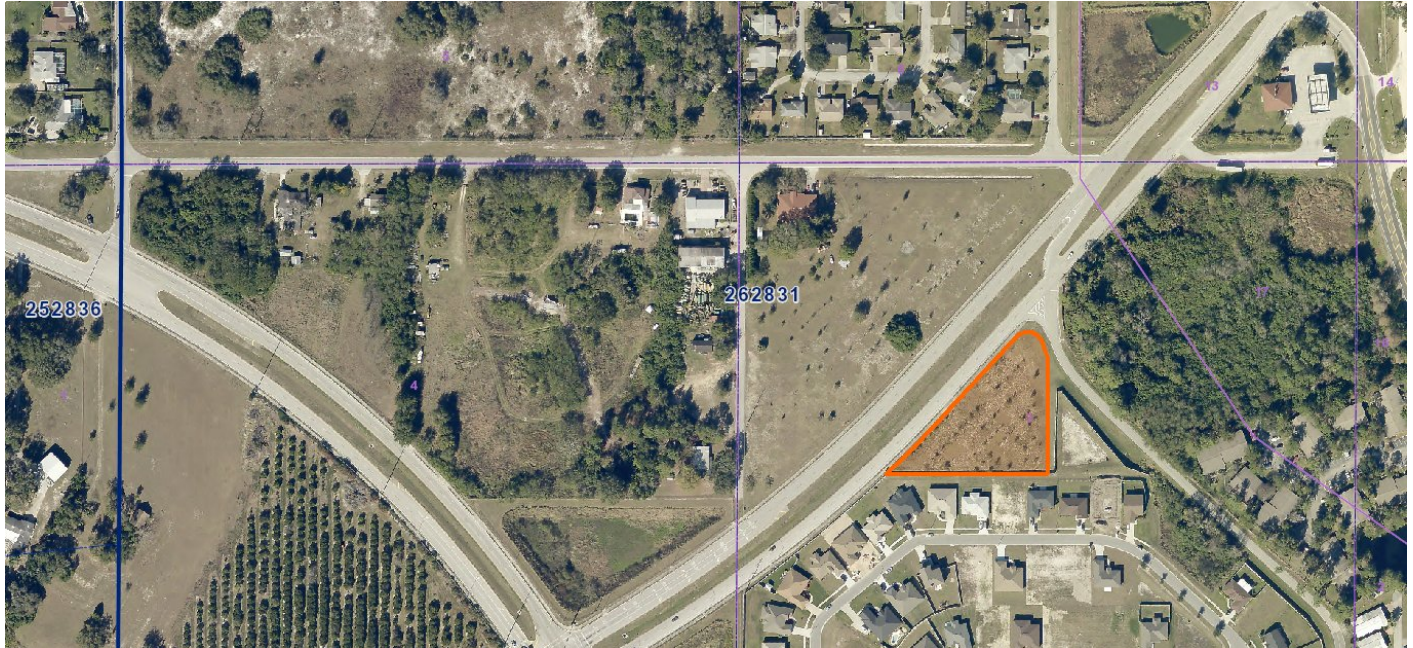
COMMERCIAL SITE

FOR SALE



Recker Highway at Coolee Road, Winter Haven

NRT





COMMERCIAL SITE

FOR SALE



Recker Highway at Coolee Road, Winter Haven

NRT

